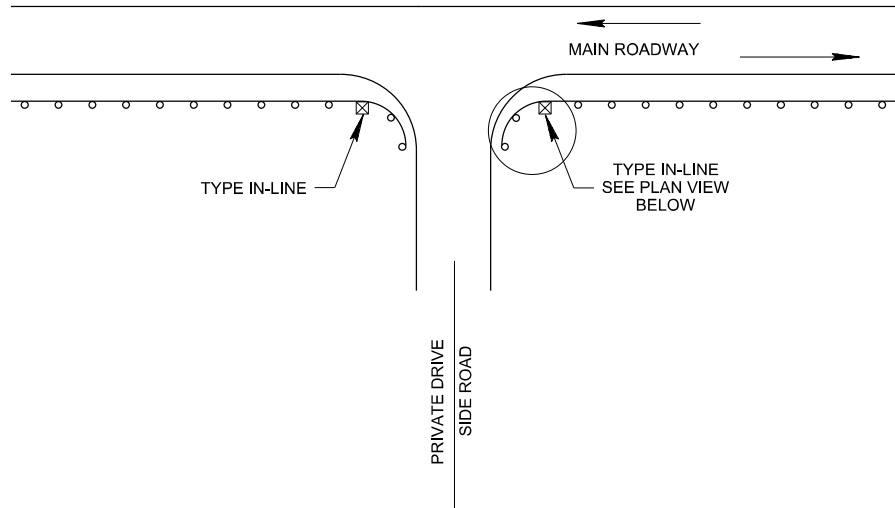
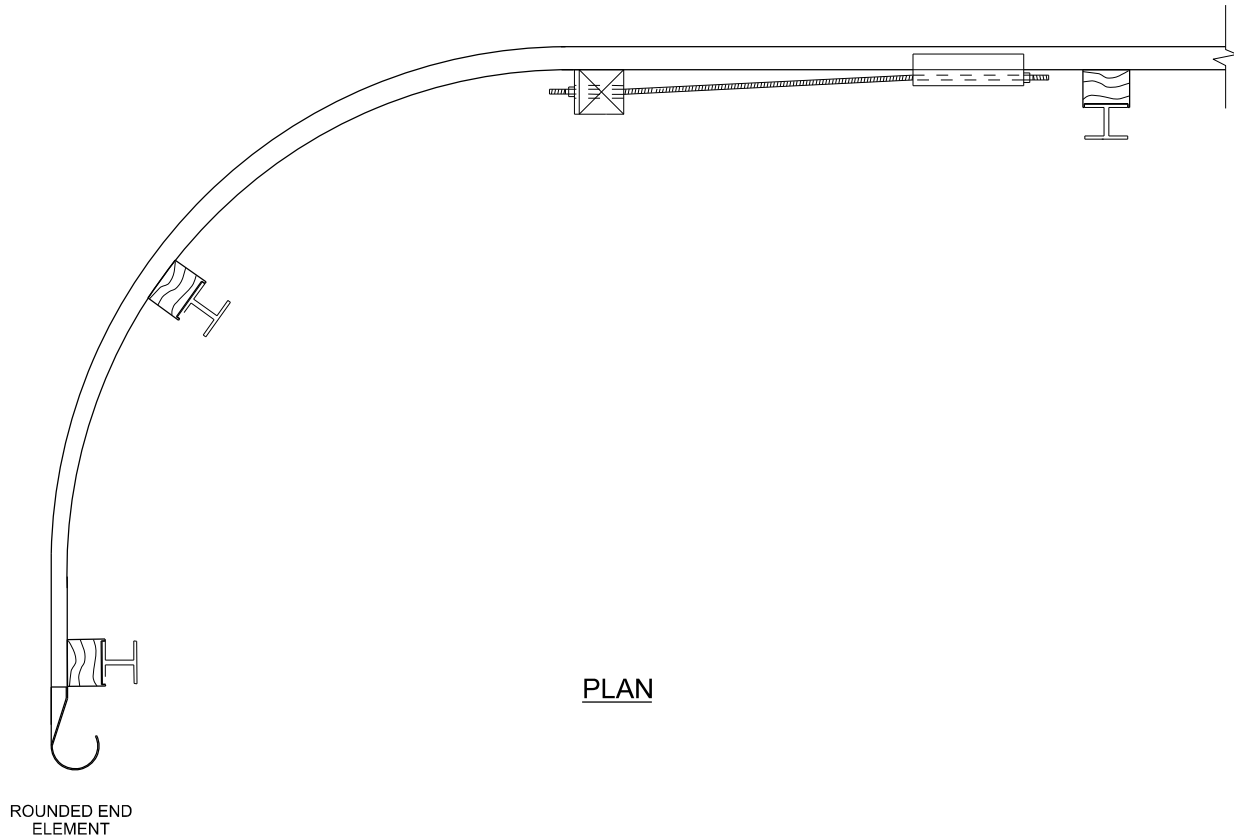


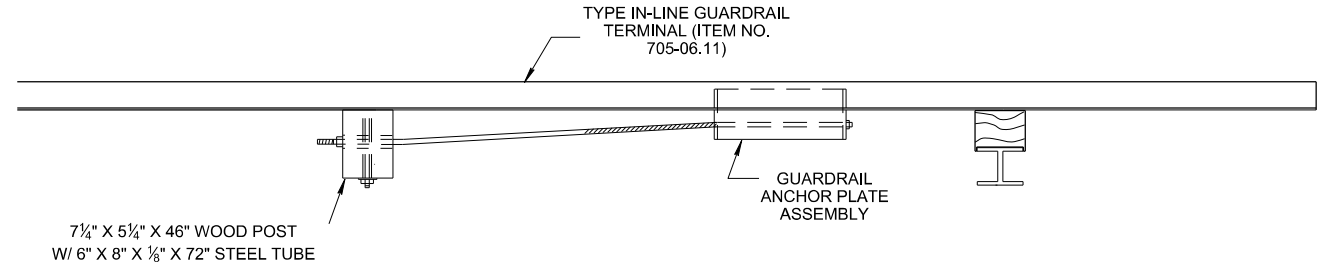
4/7/2017 5:53:04 AM  
P:\StandDraw\Working Folder For Eugene\backup dlpak on J96208\WORKSTD\2017 std dwg\SGRA4-20170328.DGN



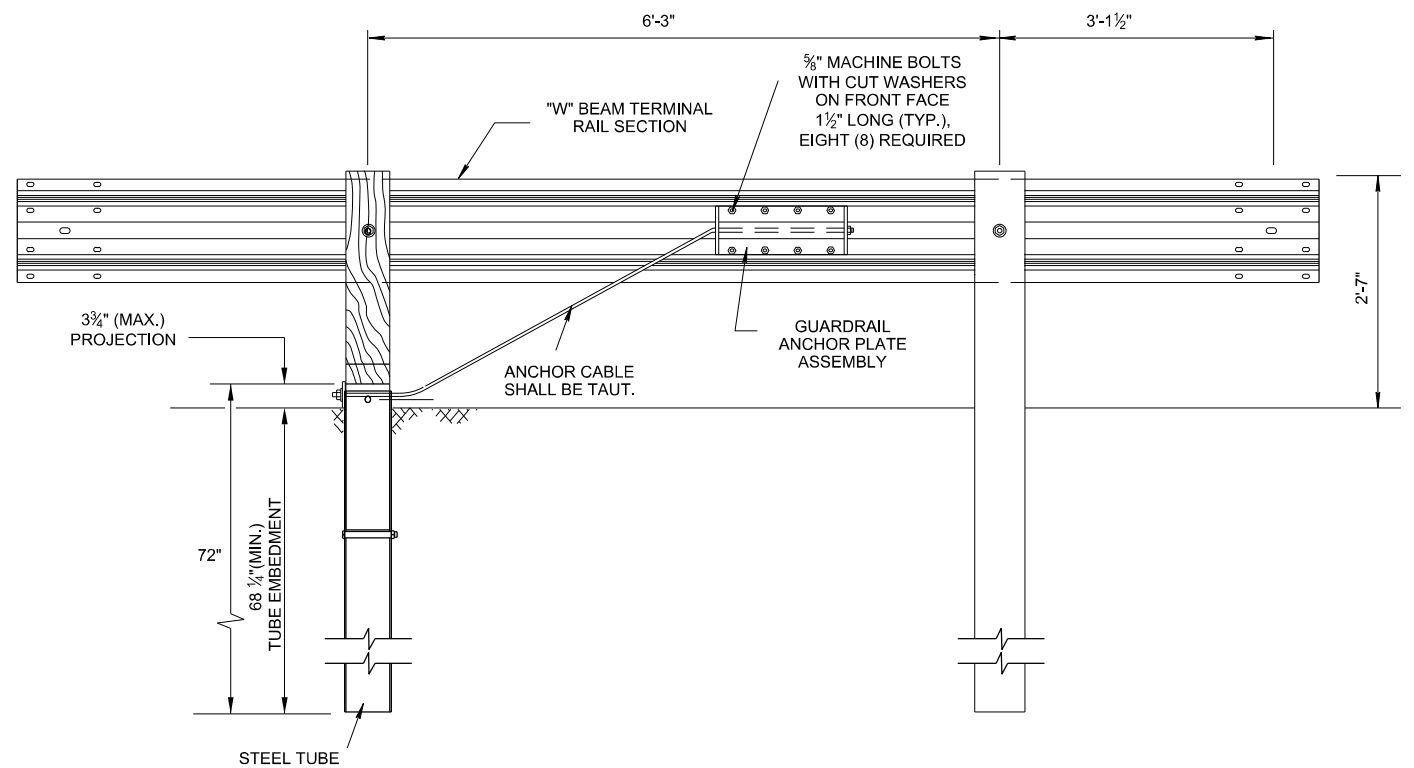
GUARDRAIL TERMINAL ANCHOR (TYPE IN-LINE) APPLICATION



PLAN



PLAN



ELEVATION FROM BEHIND GUARDRAIL  
(SEE S-GRA-3 FOR HARDWARE DETAILS)

NOTE TO DESIGNER

DO NOT USE ON NATIONAL HIGHWAY SYSTEM (NHS), USE S-PL-2 ON NHS  
DO NOT USE WITHOUT ALSO REFERENCING S-GRA-3 .

GENERAL NOTES

- (A) THIS ANCHORAGE MAY ONLY BE USED ON THE TRAILING END OF A BARRIER WHICH IS NOT EXPOSED TO DIRECT VEHICULAR IMPACT OR IS OUTSIDE THE CLEAR ZONE (ONLY DIVIDED HIGHWAYS OR ROADS WITH ONE WAY TRAFFIC) USE S-PL-1 TO DETERMINE LENGTH OF NEED.
- (B) IN-LINE GUARDRAIL TRMINAL TO BE PAID FOR UNDER ITEM NUMBER:  
PAY ITEM NO. 705-06.11 GR TERMINAL (IN-INLINE) MASH TL3 PER EACH  
COST TO INCLUDE WOOD POST, STEEL TUBE, ANCHOR CABLE, AND CABLE ASSEMBLY.

- REV. 5-27-16: REVISED POST SIZE IN PLAN VIEW. ADDED DIMENSIONS. REVISED DETAIL, REVISED NOTES.
- REV. 3-28-17: CHANGED PAY ITEM NUMBER.

MINOR REVISION -- FHWA  
APPROVAL NOT REQUIRED.

STATE OF TENNESSEE  
DEPARTMENT OF  
TRANSPORTATION

IN-LINE  
GUARDRAIL  
ANCHOR

7-11-13

S-GRA-4